



AIR CONDITIONING



REFRIGERATION



HEATING



EN

mini tank

CONDENSATE REMOVAL PUMP



The new and improved Mini Tank pump can be wall mounted, floor mounted, in-pan or suspended on M8 / M10 rod. Using piston technology this is a compact, powerful and multi functional tank pump.



35L/h max. flow



15m max. rec. head
(flow rate 10L/h)

KEY FEATURES

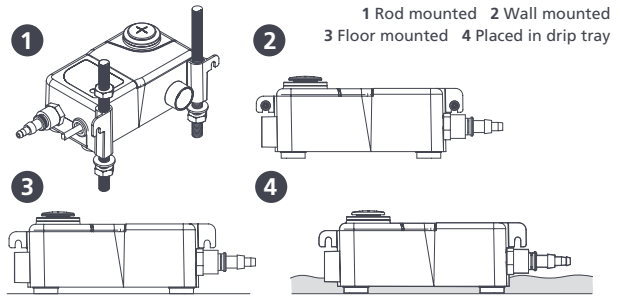
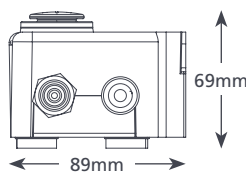
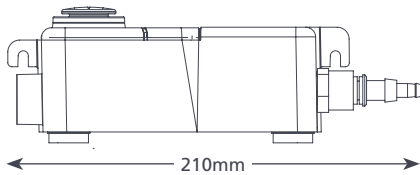
- Four ways to install
- Compact & discreet
- Can be located in drain pan
- Easy maintenance

SUITABILITY

- Up to 46kW / 157,000Btu/h
 - Ducted units; Floor standing & chassis units; Cassette units
- ✓ **Perfect for...** Installation versatility

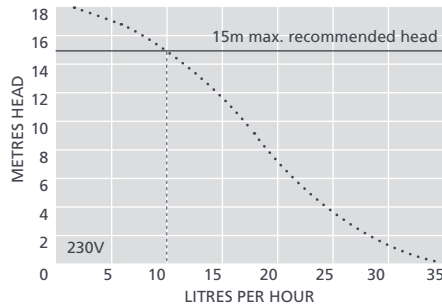


0.57 kg



MINI TANK SPECIFICATIONS

Max. flow	35L/h @ 0 head
Max. rec. head	15m
Tank capacity	0.24L
Sound level@1m	35dB(A)
Power supply	230V AC 50-60Hz 0.1A*
Rated	Non continuous
Class	II appliance <input type="checkbox"/>
Max. unit output	46kW / 157,000Btu/h
Max. water temp	40°C / 104°F
Inlets	x2 22mm, 12mm & 27mm
Outlets	6mm & 10mm
IP Protection	IP67
Safety switch	3.0A Normally closed
Thermal protection	✓
Fully potted	✓
Self priming	✓



SUGGESTED XTRA ACCESSORIES

Description	Part No.
Tank pump connector 16mm-21mm	FP2011
Tube To Soil Stack Adaptor	FP2038
Vinyl Tube Braided 1/4" (6mm)	AX5110

Xtra For more installation accessories take a look at our Aspen Xtra range

MINI TANK OPTIONS

Mini Tank FP1056/2

*Other voltages available

IN THE BOX

Mini Tank pump (including hard wired 1.5m power cable) • x2 Rubber adaptors (21.5mm & 31mm) • Anti siphon device • Fixing kit • Install manual

Download manual at aspenspumps.com

View install video at aspenspumps.com