

AIRSTAGE

FUJITSU

Multi Systems

Multiple Room Solutions



Why Choose Fujitsu?

Australia's Favourite Air®

Fujitsu General is a leading supplier of air conditioners in Australia, with a portfolio to suit both residential and commercial applications. We focus all of our research and manufacturing strengths into air conditioners which has resulted in our extensive range of world-class, energy efficient, market-leading air conditioners.

Fujitsu General strives to consistently provide high quality, reliable products accompanied by superior customer service. To be 'Australia's Favourite Air®' means to be the best air conditioning company to deal with in Australia, not just a leading air conditioning brand.

That's why we're proud to say we are 'Australia's Favourite Air®'.

Fujitsu Channel Partner Network

Fujitsu have a comprehensive network of retailers and dealers right across Australia. This ensures that there is a local stockist in your area to assist you in purchasing a Fujitsu air conditioning system for your home.

An Award-Winning Brand

Fujitsu understands that our customers are investing in our brand and trusting that we will provide their family with a comfortable living environment all year round.

Fujitsu is honoured to be voted Reader's Digest Most Trusted Brand in the Air Conditioning category from 2018-2022 and awarded highly commended in 2023.

Fujitsu General has also won the ProductReview.com.au Best Appliance Brands award for 2023.



Peace of Mind

Fujitsu believe in the quality and reliability of every air conditioner we sell. This is why we're happy to provide a 5 year parts and labour warranty across the entire range.





Exceptional after sales service



Trusted brand



5 year manufacturer's warranty

Sporting Chance

Fujitsu General Australia is extremely proud to be a major sponsor of the Sporting Chance Cancer Foundation. Established in 1996, Sporting Chance is a not-for-profit organisation that helps provide home support and care to children with cancer.



To date, Fujitsu General has donated more than \$10M to this worthy cause, with a percentage of sales from Fujitsu's air conditioning units going towards the funding of outreach programs and exploring better ways to treat and overcome cancer.

Sporting Chance initiatives allow families to spend more quality time at home together, while still having access to the appropriate care for their child.

State of the Art Research and Development

Our state of the art research and development centre, located at our headquarters in Japan, is equipped with numerous testing facilities simulating a variety of air conditioning operating conditions. Our rigorous testing aims to meet Fujitsu's high standard of product quality and reliability.

Exceptional After Sales Service

At Fujitsu, we pride ourselves on providing exceptional customer service. Fujitsu General Assist is our in-house customer care and technical support department which was implemented to deliver a high level of support and accessibility to our customers.

Fujitsu General Assist deploys Fujitsu-trained technicians in Sydney, Melbourne, Brisbane, Adelaide, and Perth and provides access to dedicated Service Agents in all other parts of Australia. These technicians are well equipped with the necessary tools and spare parts to enable them to resolve issues onsite, promptly. This offers customers a high first time fix rate and seamless experience.





Multi Systems

A variety of indoor models ranging in capacity class from 2.0kW to 7.0kW

Cooling capacity



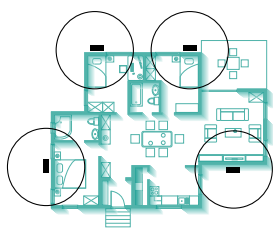
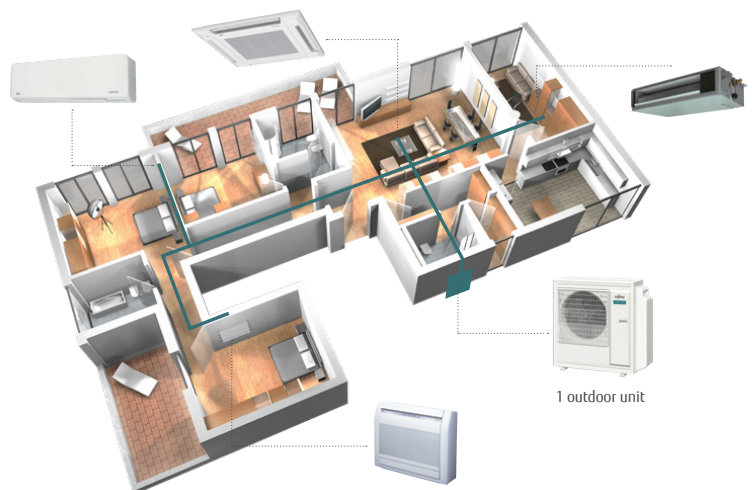
What are Multi Systems?

A multi system is ideal when individual units are required in more than one room and when a traditional whole home ducted system may not be suitable due to the homes design.

A multi system can cool or heat multiple rooms, allowing for a variety of up to six indoor units to be connected to just one compact outdoor unit. This means greater installation flexibility and outdoor space saving options.

Wide Range of Options

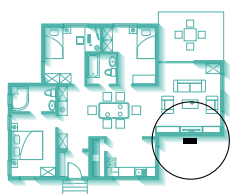
Fujitsu General have extended their line-up of R32 products with the launch of the new 3 and 4 rooms multi system outdoor units. The use of R32 refrigerant improves heat transfer and compared to the commonly used R410A refrigerant, has a 67 per cent¹ lower 'Global Warming Potential Factor' whilst still maintaining the performance of the unit. The 3 room outdoor unit has a rated cooling capacity of 6.8kW and the 4 room outdoor unit has a rated cooling capacity of 8.0kW.



**WITHOUT
A MULTI SYSTEM**



4 outdoor units



**WITH
A MULTI SYSTEM**



1 outdoor unit

Extensive indoor unit line-up

The range of connectable R32 indoor units on the 3 and 4 rooms multi system has been extended to 21 models across 6 different styles including wall mounted, bulkhead, slimline, mini duct, compact cassette and floor mounted, giving consumers an extensive range to choose from to suit their individual room requirements. The indoor units can be controlled individually via a remote control or simultaneously via a central controller.

Flexible Installation

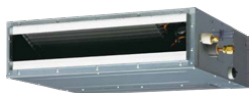
Due to the latest design, flexible installation of the outdoor unit is possible even in limited and narrow spaces.

¹ <https://www.dcccew.gov.au/environment/protection/ozone/rac/global-warming-potential-values-hfc-refrigerants>

3 & 4 Room Multi System

- ✓ 21 indoor units to choose from
- ✓ Space saving - requires only one outdoor unit
- ✓ Individual room temperature control
- ✓ R32 refrigerant
- ✓ Central controller option
- ✓ Easy installation and setup

Indoor units



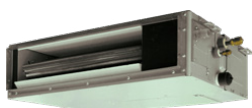
Range

BULKHEAD

Capacity Class from
2.5kW to 5.0kW

Models

ARTH09KLLAP
ARTH12KLLAP
ARTH18KLLAP



MINI DUCT

Capacity Class from
2.5kW to 5.0kW

ARTH09KSLAP
ARTH12KSLAP
ARTH18KSLAP



MID STATIC SLIMLINE

Capacity Class from
5.0kW to 7.0kW

ARTH18KMTAP
ARTH24KMTAP



WALL MOUNTED

Capacity Class from
2.0kW to 7.0kW

ASTH07KMCD ASTH14KMCD ASTH24KMTD
ASTH09KMCD ASTH18KMTD
ASTH12KMCD ASTH22KMTD



CASSETTE

Capacity Class from
2.5kW to 5.0kW

AUTH09KVLA
AUTH12KVLA
AUTH18KVLA



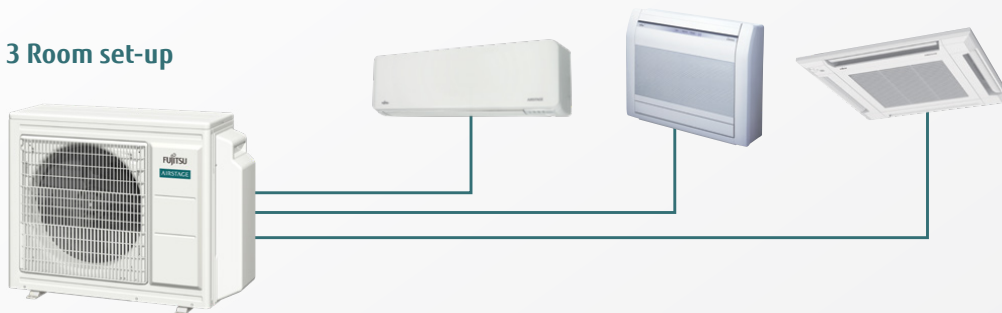
FLOOR MOUNT

Capacity Class from
2.5kW to 4.0kW

AGTG09KVCA
AGTG12KVCA
AGTG14KVCA

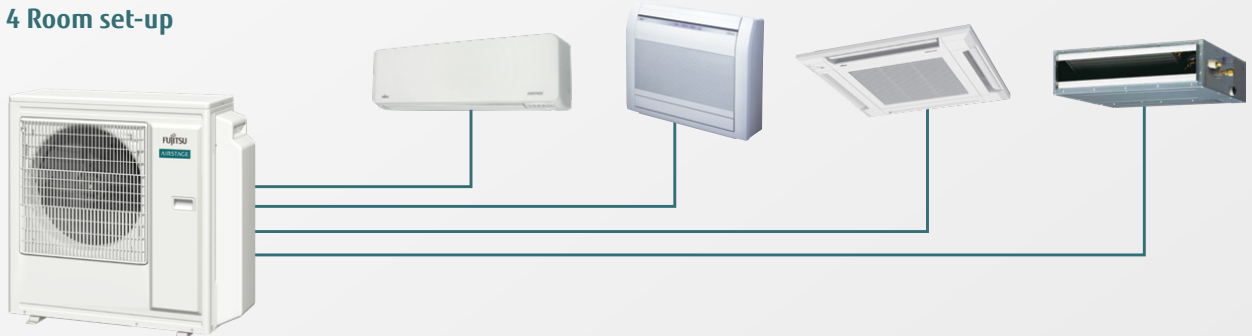


3 Room set-up



A0TH24KBCA3

4 Room set-up

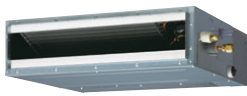


A0TH30KBT44

5 & 6 Room Multi System

- ✓ 15 indoor units to choose from
- ✓ Space saving - requires only one outdoor unit
- ✓ Individual room temperature control
- ✓ R410A refrigerant
- ✓ Central controller option
- ✓ Easy installation and setup

Indoor units



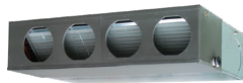
Range

SLIM DUCT

Capacity Class from
2.5kW to 5.0kW

Models

ARTG09LLLB
ARTG12LLLB
ARTG18LLTA



MID STATIC DUCT

Capacity Class of
7.0kW

ARTG24LMLC



WALL MOUNTED

Capacity Class from
2.0kW to 7.0kW

ASTG07LVCC
ASTG09LVCC
ASTG12LVCC
ASTG09LUCB
ASTG14LUCB
ASTG18LFCA
ASTG24LFCC



COMPACT CASSETTE

Capacity Class from
2.5kW to 5.0kW

AUTG09LVLB
AUTG12LVLB
AUTG18LVLA



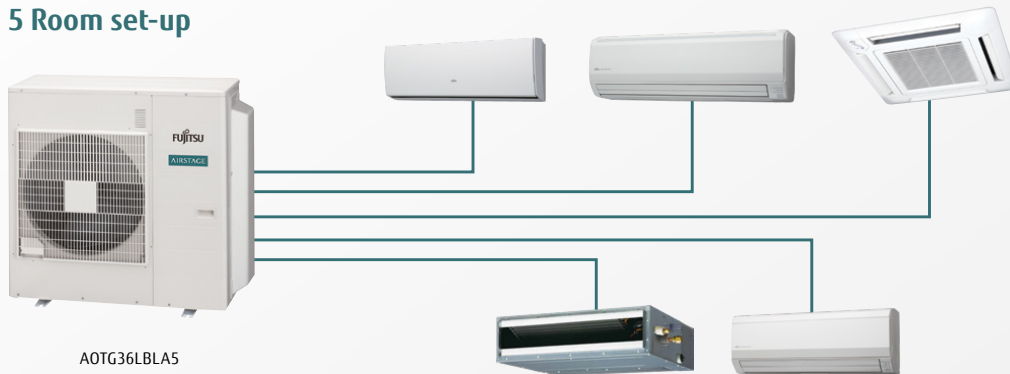
FLOOR AND CEILING CONSOLE

Capacity Class of
5.0kW

ABTG18LVTA

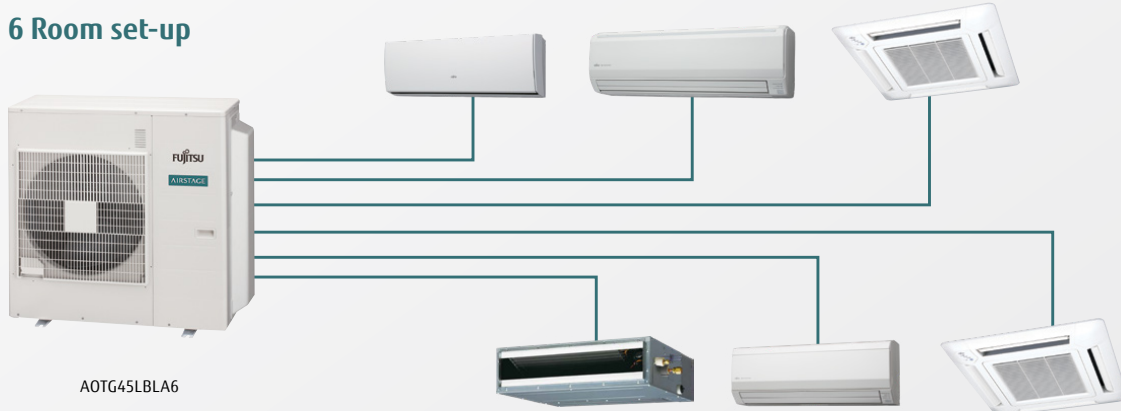


5 Room set-up



AOTG36LBLA5

6 Room set-up



AOTG45LBLA6

Feature Checklist

		ARTH09KLLAP	ARTH12KLLAP	ARTH18KLLAP	ARTH09KSLAP	ARTH12KSLAP	ARTH18KSLAP	ARTH18KMTAP	ARTH24KMTAP	ASTH07KMCD	ASTH09KMCD	ASTH12KMCD	ASTH14KMCD	ASTH18KMTD
		BULKHEAD		MINI DUCT			MID STATIC SLIMLINE		WALL MOUNTED					
		3 & 4 ROOMS												
10°C Heat Operation	The room temperature can be set to go no lower than 10°C, ensuring that the room does not get too cold when not occupied.									✓	✓	✓	✓	✓
Apple-Catechin Filter	Fine dust, invisible mould spores and harmful microorganisms are absorbed onto the filter by static electricity and further growth is inhibited and deactivated by the polyphenol ingredient extracted from apples.									✓	✓	✓	✓	✓
Auto Changeover	Automatically switches between operating modes based on the temperature setting and room temperature	✓	✓	✓	✓	✓	✓	✓	✓	✓	✓	✓	✓	✓
Auto Restart	The unit will automatically restart in the same operating mode after a temporary loss of power	✓	✓	✓	✓	✓	✓	✓	✓	✓	✓	✓	✓	✓
Automatic Fan Speed	The micro processor automatically adjusts the airflow effectively to follow the changes of room temperature.	✓	✓	✓	✓	✓	✓	✓	✓	✓	✓	✓	✓	✓
Automatic Louvre	The position of the louvres is set automatically to match the operating mode. It is also possible to adjust the louvres using the remote control.									✓	✓	✓	✓	✓
Connectable Distributing Duct	Systems are capable of attaching field-supplied branch ducts distributing the airflow							✓	✓					
Connectable Fresh Air Duct	Systems are capable of attaching field-supplied branch ducts to bring fresh air in							✓	✓					
Economy Mode	The temperature will adjust by 1°C to allow for a reduction in power drawn from the compressor to help save energy	✓	✓	✓	✓	✓	✓	✓	✓	✓	✓	✓	✓	✓
Filter Sign	Set the interval frequency to be reminded to clean the air filter on your unit							✓	✓	✓	✓	✓	✓	✓
Human Sensor	The human sensor detects movement so that when occupants leave the room, the heat pump/air conditioner switches into energy saving mode after 20 minutes should no movement be detected. When occupants re-enter the room, it returns to normal operation.									✓	✓	✓	✓	✓
Long-life Ion Deodorisation Filter	The filter deodorises by powerfully decomposing absorbed odours using the oxidising and reducing effects of ion generated by the ultra-fine-particle ceramic.									✓	✓	✓	✓	✓
Low Noise Mode	The compressor speed and the outdoor unit fan speed are limited to reduce the operational noise.									✓	✓	✓	✓	✓
On-Off Timer	Can be set to operate once every 24 hours	✓	✓	✓	✓	✓	✓	✓	✓	✓	✓	✓	✓	✓
Program Timer	Allows selection of one of four options. ON, OFF, ON-->OFF, or OFF-->ON	✓	✓	✓	✓	✓	✓	✓	✓	✓	✓	✓	✓	✓
Powerful Mode	This mode will operate the heat pump/air conditioner at maximum capacity for 20 minutes, providing comfort faster than ever before.									✓	✓	✓	✓	✓
Sleep Timer	The micro-processor gradually changes the room temperature, allowing you to sleep comfortably at night.	✓	✓	✓	✓	✓	✓	✓	✓	✓	✓	✓	✓	✓
Super Quiet Mode	The indoor units fan can operate at a low speed to produce quieter operation.									✓	✓	✓	✓	✓
Washable Panel	Dust which accumulates on the heat pump/air conditioner can be easily cleaned with a damp cloth.									✓	✓	✓	✓	✓
Weekly Timer	Different on-off timers can be set for up to 7 days	✓	✓	✓	✓	✓	✓	✓	✓	✓	✓	✓	✓	✓

ASTH22KMTD	ASTH24KMTD	AUTH09KVA	AUTH12KVA	AUTH18KVA	AGT09KVCA	AGT12KVCA	AGT14KVCA	ARTG09LLB	ARTG12LLB	ARTG18LTA	ARTG24MLC	ASTG07VCC	ASTG09VCC	ASTG12VCC	ASTG09LUCB	ASTG14LUCB	ASTG18LFA	ASTG24LFC	AUTG09VLB	AUTG12VLB	AUTG18VLA	ABTG18LVTA	
WALL MOUNTED			CASSETTE			FLOOR MOUNT			SLIM DUCT				MID STATIC DUCT	WALL MOUNTED						COMPACT CASSETTE			FLOOR AND CEILING (CONSOLE)
3 - 4 ROOMS								5 & 6 ROOMS															
✓	✓				✓	✓	✓	■	■	■	■	✓	✓	✓	✓	✓	✓	✓	✓	✓	✓	✓	
✓	✓				✓	✓	✓					✓	✓	✓	✓	✓	✓	✓	✓				
✓	✓	✓	✓	✓	✓	✓	✓	✓	✓	✓	✓	✓	✓	✓	✓	✓	✓	✓	✓	✓	✓	✓	
✓	✓	✓	✓	✓	✓	✓	✓	✓	✓	✓	✓	✓	✓	✓	✓	✓	✓	✓	✓	✓	✓	✓	
✓	✓	✓	✓	✓	✓	✓	✓	✓	✓	✓	✓	✓	✓	✓	✓	✓	✓	✓	✓	✓	✓	✓	
✓	✓	✓	✓	✓	✓	✓	✓	◆	◆	◆		✓	✓	✓	✓	✓	✓	✓	✓			✓	
								✓	✓	✓	✓				✓	✓							
✓	✓	✓	✓	✓	✓	✓	✓	✓	✓	✓	✓	✓	✓	✓	✓	✓	✓	✓	✓	✓	✓	✓	
✓	✓	✓	✓	✓				✓	✓	✓	✓	✓	✓	✓	✓	✓	✓	✓	✓	✓	✓	✓	
✓	✓														✓	✓							
✓	✓				✓	✓	✓					✓	✓	✓	✓	✓	✓	✓					
✓	✓	✓	✓	✓	✓	✓	✓	✓	✓	✓	✓	✓	✓	✓	✓	✓	✓	✓	✓	✓	✓	✓	
✓	✓	✓	✓	✓	✓	✓	✓	✓	✓	✓	✓	✓	✓	✓	✓	✓	✓	✓	✓	✓	✓	✓	
✓	✓														✓	✓							
✓	✓	✓	✓	✓	✓	✓	✓	✓	✓	✓	✓	✓	✓	✓	✓	✓	✓	✓	✓	✓	✓	✓	
✓	✓	✓	✓	✓	✓	✓	✓	✓	✓	✓	✓	✓	✓	✓	✓	✓	✓	✓	✓	✓	✓	✓	
✓	✓	✓	✓	✓	✓	✓	✓					✓	✓	✓	✓	✓	✓	✓	✓	✓	✓	✓	
✓	✓				✓	✓	✓	✓	✓	✓	✓	▲	▲	▲	✓	✓	▲	▲	▲	▲	▲	▲	

- Available when using a wireless remote only.
- ▲ Optional feature when using a wired controller and communication kit where applicable.
- ◆ Available when optional auto louvre grille kit is purchased.

3 & 4 Rooms Multi System Controller Options

Wired remote controller



UTY-RNRYT5
UTY-RNRYZ3



UTY-RVNYN

Wireless remote controller



AR-REJ1E



AR-REW3E



AR-REW1E



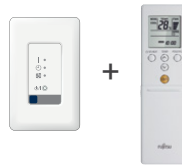
AR-REM7E

Central controller



UTY-DMMYM1

IR receiver unit



UTY-LBTYM

Simple remote controller



UTY-RSRYT



UTY-RHRYT



UTY-RSNYN

TYPE	MODEL	WALL MOUNTED		FLOOR	COMPACT CASSETTE	BULKHEAD	MID STATIC SLIMLINE
		KMCD	18/24KMTD	KVCA	KVLA	KSLAP / KLLAP	KMTAP
WIRED REMOTE CONTROLLER	UTY-RNRYZ3	-	-	-	-	A	-
	UTY-RNRYT5	○ ¹	○ ¹	○ ²	○	○	○
	UTY-RNRT	-	-	-	-	-	A
	UTY-RVNYN	-	-	-	-	-	○
GROUP CONTROLLER	UTY-DMMYM1	○	○	○	○	○	○
WIRELESS REMOTE CONTROLLER	AR-REJ1E	-	-	-	A	-	-
	AR-REW3E	A	-	-	-	-	-
	AR-REW1E	-	-	-	-	-	-
	AR-REM7E	-	A	-	-	-	-
IR RECEIVER UNIT	UTY-LBTYM	-	-	-	○	○	○
SIMPLE REMOTE CONTROLLER	UTY-RSRYT	○ ¹	○ ¹	○ ²	○	○	○
	UTY-RHRYT	○ ¹	○ ¹	○ ²	○	○	○
	UTY-RSNYN	-	-	-	-	-	○

A Standard Accessory **○** Optional **○¹** Optional Communication Kit (UTY-TWRXZ2) is necessary for the installation.
○² Optional Communication Kit (UTY-TWRXZ3) is necessary for the installation.

5 & 6 Rooms Multi System Controller Options

Wired remote controller



UTY-RVNYN



UTY-RNNYN

Wireless remote controller



AR-RAH2E



AR-RAH1E



AR-REA1E

Central controller



UTY-DMMYM

IR receiver unit



UTY-LRHYM



Simple remote controller



UTY-RSNYN

TYPE	MODEL	WALL MOUNTED			FLOOR/ CEILING	COMPACT CASSETTE	SLIM DUCT	MID STATIC DUCT
		LVCC	LFCC	LUCB				
WIRED REMOTE CONTROLLER	UTY-RNNYN	○ ¹	○	○ ¹	○	○	A	A
	UTY-RVNYN	○ ¹	○	○ ¹	○	○	○	○
GROUP CONTROLLER	UTY-DMMYM	○	○	○	○	○	○	○
WIRELESS REMOTE CONTROLLER	AR-RAH2E	A	A	-	A	-	-	-
	AR-RAH1E	-	-	-	-	A	-	-
	AR-REA1E	-	-	A	-	-	-	-
IR RECEIVER UNIT	UTY-LRHYM	-	-	-	-	-	○	○
SIMPLE REMOTE CONTROLLER	UTY-RSNYN	○ ¹	○	○ ¹	○	○	○	○

A Standard Accessory ○ Optional ○¹ Optional Communication Kit is necessary for the installation.

R32 Product Specifications

Wall Mounted - Lifestyle

MODEL NUMBER			ASTH07KMCD	ASTH09KMCD
kW Class		kW	2.0kW Class	2.5kW Class
Power Source		V/PH/Hz	220-240 / 1 / 50	
Noise Level	Cool	H / M / L / Q	38 / 34 / 29 / 21	
	Heat		41 / 36 / 31 / 22	
Air Circulation	Cool	H / M / L / Q	181 / 150 / 119 / 75	
	Heat		200 / 161 / 128 / 92	
Net Dimensions		H x W x D	270 x 834 x 222	
Net Weight		kg	10	
Pipe Size	Liquid / Gas	mm	Ø6.35 / Ø9.52	Ø6.35 / Ø9.52



Wall Mounted - Lifestyle

MODEL NUMBER			ASTH12KMCD	ASTH14KMCD
kW Class		kW	3.5kW Class	4.0kW Class
Power Source		V/PH/Hz	220-240 / 1 / 50	
Noise Level	Cool	H / M / L / Q	40 / 35 / 30 / 21	
	Heat		42 / 38 / 33 / 22	
Air Circulation	Cool	H / M / L / Q	194 / 156 / 119 / 75	
	Heat		214 / 178 / 144 / 92	
Net Dimensions		H x W x D	270 x 834 x 222	
Net Weight		kg	10	
Pipe Size	Liquid / Gas	mm	Ø6.35 / Ø9.52	Ø6.35 / Ø9.52



Wall Mounted - Lifestyle

MODEL NUMBER			ASTH18KMTD	ASTH22KMTD	ASTH24KMTD
kW Class		kW	5.0kW Class	6.0kW Class	7.0kW Class
Power Source		V/PH/Hz	220-240 / 1 / 50		
Noise Level	Cool	H / M / L / Q	45 / 40 / 35 / 29		
	Heat		46 / 40 / 35 / 29		
Air Circulation	Cool	H / M / L / Q	272 / 225 / 178 / 142		
	Heat		283 / 236 / 178 / 142		
Net Dimensions		H x W x D	280 x 980 x 240		
Net Weight		kg	12.5		
Pipe Size	Liquid / Gas	mm	Ø6.35 / Ø12.70	Ø6.35 / Ø12.70	Ø6.35 / Ø12.70



Floor Mount

MODEL NUMBER			AGTG09KVCA	AGTG12KVCA	AGTG14KVCA
kW Class		kW	2.5kW Class	3.5kW Class	4.0kW Class
Power Source		V/PH/Hz	220-240 / 1 / 50		
Noise Level	Cool	H / M / L / Q	39 / 34 / 28 / 22		
	Heat		39 / 35 / 30 / 22		
Air Circulation	Cool	H / M / L / Q	147 / 122 / 100 / 75		
	Heat		147 / 128 / 106 / 75		
Net Dimensions		H x W x D	600 x 740 x 200		
Net Weight		kg	14.00		
Pipe Size	Liquid / Gas	mm	Ø6.35 / Ø9.52	Ø6.35 / Ø9.52	Ø6.35 / Ø9.52



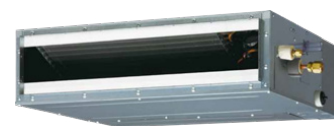
Cassette

MODEL NUMBER				AUTH09KVLA	AUTH12KVLA	AUTH18KVLA
kW Class		kW		2.5kW Class	3.5kW Class	5.0kW Class
Power Source		V/PH/HZ		220-240 / 1 / 50		
Noise Level	Cool	H / M / L / Q	dBA	33 / 31 / 29 / 27	37 / 34 / 31 / 28	42 / 37 / 33 / 29
	Heat			34 / 32 / 29 / 27	37 / 34 / 31 / 29	44 / 41 / 37 / 30
Air Circulation	Cool	H / M / L / Q	l/sec	150 / 136 / 122 / 108	169 / 147 / 131 / 114	208 / 169 / 144 / 114
	Heat			150 / 136 / 122 / 108	169 / 147 / 131 / 114	222 / 197 / 167 / 125
Grille Model Number				UTG-UFYF-W		UTG-UFYF-W
Net Dimensions - Indoor		H x W x D		mm		245 x 570 x 570
Net Weight - Indoor				kg		15
Net Dimensions - Grille		H x W x D		mm		49 x 620 x 620
Weight - Grille				kg		2.30
Pipe Size		Liquid / Gas		mm		Ø6.35 / Ø9.52



Compact Bulkhead

MODEL NUMBER				ARTH09KLLAP	ARTH12KLLAP	ARTH18KLLAP
kW Class		kW		2.5kW Class	3.5kW Class	5.0kW Class
Power Source		V/PH/HZ		220-240 / 1 / 50		
Noise Level	Cool	H / M / L / Q	dBA	28 / 27 / 26 / 24	29 / 28 / 27 / 26	32 / 30 / 29 / 27
	Heat			28 / 26 / 25 / 24	29 / 28 / 27 / 24	32 / 30 / 29 / 27
Air Circulation	Cool	H / M / L / Q	l/sec	167 / 153 / 139 / 125	181 / 167 / 153 / 133	261 / 244 / 228 / 208
	Heat			167 / 153 / 139 / 125	181 / 167 / 153 / 133	261 / 244 / 228 / 208
Static Pressure Range				Pa		0-90
Net Dimensions		H x W x D		mm		198 x 700 x 620
Net Weight				kg		17.00
Pipe Size		Liquid / Gas		mm		Ø6.35 / Ø9.52



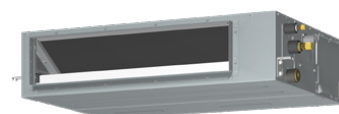
Mini Duct

MODEL NUMBER				ARTH09KSLAP	ARTH12KSLAP	ARTH18KSLAP
kW Class		kW		2.5kW Class	3.5kW Class	5.0kW Class
Power Source		V/PH/HZ		220-240 / 1 / 50		
Noise Level	Cool	H / M / L / Q	dBA	29 / 26 / 24 / 23	31 / 27 / 25 / 23	33 / 29 / 26 / 23
	Heat			29 / 26 / 24 / 23	31 / 27 / 25 / 23	33 / 29 / 26 / 23
Air Circulation	Cool	H / M / L / Q	l/sec	167 / 125 / 111 / 100	181 / 136 / 119 / 100	261 / 208 / 150 / 133
	Heat			167 / 125 / 111 / 100	181 / 136 / 119 / 100	261 / 208 / 150 / 133
Static Pressure Range				Pa		0-30
Net Dimensions		H x W x D		mm		198 x 700 x 450
Net Weight				kg		15.50
Pipe Size		Liquid / Gas		mm		Ø6.35 / Ø9.52



Mid Static Slimline

MODEL NUMBER				ARTH18KMTAP	ARTH24KMTAP	
kW Class		kW		5.0kW Class	7.0kW Class	
Power Source		V/PH/HZ		220-240 / 1 / 50		
Noise Level	Cool	H / M / L / Q	dBA	33 / 28 / 25 / 23	38 / 33 / 30 / 27	
	Heat			33 / 28 / 25 / 23	38 / 33 / 30 / 27	
Air Circulation	Cool	H / M / L / Q	l/sec	300 / 239 / 211 / 181	417 / 325 / 283 / 239	
	Heat			300 / 239 / 211 / 181	417 / 325 / 283 / 239	
Static Pressure Range				Pa		50 - 150
Net Dimensions		H x W x D		mm		240 x 1000 x 700
Net Weight				kg		31.00
Pipe Size		Liquid / Gas		mm		Ø6.35 / Ø12.7



R410A Product Specifications

Wall Mounted - Compact Classic

MODEL NUMBER		INDOOR UNIT			ASTG07LVCC	ASTG09LVCC	ASTG12LVCC
kW Class				kW	2.0kW Class	2.5kW Class	3.5kW Class
Power Source				V/PH/Hz	240 / 1 / 50		
Sound Pressure Level	Cool	H / M / L / Q	dBA		36 / 33 / 29 / 23	36 / 33 / 29 / 23	38 / 35 / 31 / 23
	Heat			36 / 33 / 32 / 22	36 / 33 / 32 / 23	38 / 35 / 33 / 24	
Airflow	Cool	H / M / L / Q	l/sec		178 / 156 / 128 / 100	178 / 156 / 128 / 100	194 / 175 / 139 / 100
	Heat			178 / 161 / 150 / 100	178 / 161 / 150 / 106	194 / 175 / 161 / 111	
Net Dimensions		H x W x D		mm	293 x 790 x 225	293 x 790 x 225	293 x 790 x 225
Net Weight				kg	9.5	9.5	9.5
Pipe Size		Liquid / Gas		mm	Ø6.35 / Ø9.52	Ø6.35 / Ø9.52	Ø6.35 / Ø9.52



Wall Mounted - Classic

MODEL NUMBER		INDOOR UNIT			ASTG18LFCA	ASTG24LFCC
kW Class				kW	5.0kW Class	7.0kW Class
Power Source				V/PH/Hz	240 / 1 / 50	
Sound Pressure Level	Cool	H / M / L / Q	dBA		43 / 37 / 33 / 26	49 / 42 / 37 / 33
	Heat			42 / 37 / 33 / 25	48 / 42 / 37 / 33	
Airflow	Cool	H / M / L / Q	l/sec		250 / 206 / 172 / 153	311 / 250 / 206 / 172
	Heat			250 / 206 / 172 / 153	306 / 250 / 206 / 172	
Net Dimensions		H x W x D		mm	320 x 998 x 238	320 x 998 x 238
Net Weight				kg	14	14
Pipe Size		Liquid / Gas		mm	Ø6.35 / Ø12.7	Ø6.35 / Ø15.88



Wall Mounted - Designer

MODEL NUMBER		INDOOR UNIT			ASTG09LUCB	ASTG14LUCB
kW Class				kW	2.5kW Class	4.0kW Class
Power Source				V/PH/Hz	240 / 1 / 50	
Sound Pressure Level	Cool	H / M / L / Q	dBA		36 / 32 / 28 / 21	41 / 36 / 33 / 25
	Heat			36 / 32 / 28 / 21	41 / 36 / 34 / 27	
Airflow	Cool	H / M / L / Q	l/sec		167 / 153 / 131 / 92	197 / 178 / 158 / 108
	Heat			167 / 153 / 131 / 92	197 / 178 / 164 / 119	
Net Dimensions		H x W x D		mm	282 x 870 x 185	282 x 870 x 185
Net Weight				kg	9.5	9.5
Pipe Size		Liquid / Gas		mm	Ø6.35 / Ø9.52	Ø6.35 / Ø12.7



Floor And Ceiling Console

MODEL NUMBER		INDOOR UNIT			ABTG18LVTA
kW Class				kW	5.0kW Class
Power Source				V/PH/Hz	240 / 1 / 50
Sound Pressure Level	Cool	H / M / L / Q	dBA		UC - 41 / 38 / 34 / 32
	Heat			UC - 41 / 38 / 34 / 32	
	Cool	H / M / L / Q	dBA		FC - 44 / 41 / 37 / 35
	Heat			FC - 44 / 41 / 37 / 35	
Airflow	Cool	H / M / L / Q	l/sec		217 / 194 / 156 / 139
	Heat			217 / 194 / 156 / 139	
Net Dimensions		H x W x D		mm	199 x 990 x 655
Net Weight				kg	27
Pipe Size		Liquid / Gas		mm	Ø6.35 / Ø12.7



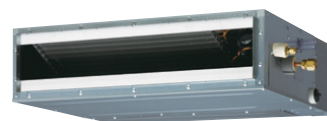
Compact Cassette

MODEL NUMBER		INDOOR UNIT			AUTG09LVLB	AUTG12LVLB	AUTG18LVL
kW Class				kW	2.5kW Class	3.5kW Class	5.0kW Class
Power Source				V/PH/HZ	240 / 1 / 50		
Sound Pressure Level	Cool	H / M / L / Q	dBA		33 / 31 / 29 / 27	37 / 33 / 31 / 28	42 / 37 / 33 / 29
	Heat			34 / 32 / 29 / 27	37 / 33 / 31 / 28	44 / 40 / 37 / 30	
Airflow	Cool	H / M / L / Q	l/sec		150 / 136 / 122 / 108	169 / 147 / 131 / 114	208 / 169 / 144 / 114
	Heat			150 / 136 / 122 / 108	169 / 147 / 131 / 114	222 / 197 / 167 / 125	
Grille Model Number					UTG-UFYD-W	UTG-UFYD-W	UTG-UFYD-W
Net Dimensions - Indoor		H x W x D		mm	245 x 570 x 570	245 x 570 x 570	245 x 570 x 570
Net Weight - Indoor				kg	15	15	15
Net Dimensions - Grille		H x W x D		mm	49 x 700 x 700	49 x 700 x 700	49 x 700 x 700
Weight - Grille				kg	2.6	2.6	2.6
Pipe Size		Liquid / Gas		mm	Ø6.35 / Ø9.52	Ø6.35 / Ø9.52	Ø6.35 / Ø12.7



Slim Duct

MODEL NUMBER		INDOOR UNIT			ARTG09LLLB	ARTG12LLLB	ARTG18LLTA
kW Class				kW	2.5kW Class	3.5kW Class	5.0kW Class
Power Source				V/PH/HZ	240 / 1 / 50		
Sound Pressure Level	Cool	H / M / L / Q	dBA		28 / 27 / 26 / 25	29 / 28 / 27 / 26	32 / 31 / 30 / 29
	Heat			28 / 26 / 25 / 24	29 / 28 / 27 / 24	33 / 32 / 31 / 29	
Airflow	Cool	H / M / L / Q	l/sec		167 / 153 / 139 / 125	181 / 167 / 153 / 133	261 / 244 / 228 / 208
	Heat			167 / 153 / 139 / 125	181 / 167 / 153 / 133	261 / 244 / 228 / 208	
Static Pressure Range				Pa	0 to 90	0 to 90	0 to 90
Net Dimensions		H x W x D		mm	198 x 700 x 620	198 x 700 x 620	198 x 900 x 620
Net Weight				kg	19	19	23
Pipe Size		Liquid / Gas		mm	Ø6.35 / Ø9.52	Ø6.35 / Ø9.52	Ø6.35 / Ø12.7



Mid Static Duct

MODEL NUMBER		INDOOR UNIT			ARTG24LMC
kW Class				kW	7.0kW Class
Power Source				V/PH/HZ	240 / 1 / 50
Sound Pressure Level	Cool	H / M / L / Q	dBA		31 / 29 / 27 / 25
	Heat			31 / 29 / 27 / 25	
Airflow	Cool	H / M / L / Q	l/sec		306 / 253 / 208 / 161
	Heat			306 / 253 / 208 / 161	
Static Pressure Range				Pa	30 to 150
Net Dimensions		H x W x D		mm	270 x 1135 x 700
Net Weight				kg	38
Pipe Size		Liquid / Gas		mm	Ø6.35 / Ø15.88



Outdoor Product Specifications

Outdoor unit				A0TH24KBCA3	A0TH30KBT4	A0TC36LBA5	A0TC45LBA6
				3 & 4 ROOMS		5 & 6 ROOMS	
Power Source	V / Ph / Hz			220-240 / 1/ 50			
Capacity	Cooling (Rated (Min - Max))	kW		6.8 (1.8 - 8.5)	8.0 (2.4 - 10.1)	10.0 (3.5 - 12.5)	12.5 (3.5 - 14.0)
	Heating (Rated (Min - Max))	kW		8.0 (2.0 - 9.2)	9.6 (3.0 - 12.0)	12.0 (3.5 - 14.0)	13.5 (3.5 - 16)
Input Power	Cooling (Rated (Max))	kW		1.74 (2.65)	2.05 (2.88)	2.44 (4.04)	3.57 (5.02)
	Heating (Rated (Max))	kW		1.76 (2.35)	2.00 (3.25)	2.79 (3.98)	3.37 (4.59)
EER	Cooling	kW / kW		3.90	3.90	4.10	3.50
COP	Heating	kW / kW		4.54	4.80	4.30	4.00
TCSPF ¹	Residential (Hot/Average/Cold)	kW		5.601 / 5.332 / 5.642	5.663 / 5.402 / 5.72	5.779 / 5.258 / 5.441	5.374 / 4.937 / 5.215
HSPF ²	Residential (Hot/Average/Cold)	kW		5.583 / 4.919 / 4.161	5.548 / 4.951 / 4.183	5.242 / 4.75 / 4.396	5.19 / 4.595 / 4.125
Running current	Cooling/Heating	amps		7.7 / 7.8	9.1 / 8.9	10.3 / 11.8	15.0 / 14.2
Sound Pressure Level	Outdoor (Cooling/Heating)	High	dBa	46 / 52	48 / 54	52 / 54	52 / 54
Sound Power Level	Outdoor	High	dBa	61	65	68	68
Dimensions	Outdoor	H x W x D	mm	716 x 820 x 315	884 x 820 x 315	998 x 970 x 370	998 x 970 x 370
Net Weight	Outdoor	kg		46	59	93	94
Connection Pipe Sizes	Unit A	Liquid / Gas	mm	6.35 / 12.7	6.35 / 12.7	6.35 / 12.7	6.35 / 12.7
	Unit B			6.35 / 9.52	6.35 / 12.7	6.35 / 12.7	6.35 / 12.7
	Unit C			6.35 / 9.52	6.35 / 9.52	6.35 / 9.52	6.35 / 9.52
	Unit D			-	6.35 / 9.52	6.35 / 9.52	6.35 / 9.52
	Unit E			-	-	6.35 / 9.52	6.35 / 9.52
Pipe Length (Max (Precharged))		m		50 (30)	70 (40)	80 (50)	80 (50)
Max Height Difference		m		30	30	30	30
Operation Range	Outdoor (Min - Max)	Cooling	°CDB	-10 to 50	-10 to 50	-10 to 46	-10 to 46
		Heating	°CDB	-15 to 24	-15 to 24	-15 to 24	-15 to 24
Refrigerant	Type			R32	R32	R410A	R410A
	Charge	g		1800	2500	4,000	4,000

¹ Total Cooling Seasonal Performance Factor

² Heating Seasonal Performance Factor

Specifications and features

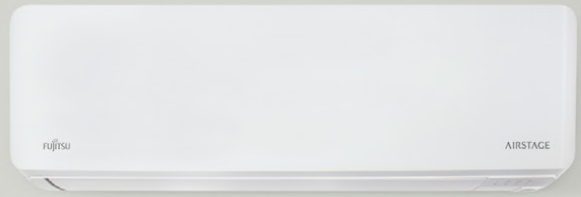
Products in this brochure contain R32 refrigerant. Please refer to specifications before installation and servicing this product. Only persons and / or companies qualified and experienced in the installation, service and repair of refrigerant products should be permitted to do so. The purchaser must ensure that the person and / or company who is to install, service or repair this air conditioner has qualifications and experience in refrigerant products. Suitable access for warranty and service is required. Future improvements, specifications, designs of product and availability are subject to change without notice. Please check with your Dealer.

All Capacity and Energy Efficiency ratings are based on AS / NZS3823.2.

Cooling Indoor temperature 27°C DB / 19°C WB
Outdoor temperature 35°C DB

Heating Indoor temperature 20°C DB
Outdoor temperature 7°C DB / 6°C WB

Running current is at rated conditions (AS3823) and does not include compressor start-up or variations in power supply and load conditions.



Connection Charts

AOTH24KBCA3 (2 - 3 ROOMS)

COMBINATION NO.	UNIT 1	UNIT 2	UNIT 3	TOTAL
1	7	7	-	14
2	7	9	-	16
3	7	12	-	19
4	7	14	-	21
5	7	18	-	25
6	9	9	-	18
7	9	12	-	21
8	9	14	-	23
9	9	18	-	27
10	12	12	-	24
11	12	14	-	26
12	12	18	-	30
13	14	14	-	28
14	14	18	-	32
15	7	7	7	21
16	7	7	9	23
17	7	7	12	26
18	7	7	14	28
19	7	7	18*	32
20	7	9	9	25
21	7	9	12	28
22	7	9	14	30
23	7	9	18*	34
24	7	12	12	31
25	7	12	14	33
26	7	14	14	35
27	9	9	9	27
28	9	9	12	30
29	9	9	14	32
30	9	9	18*	36
31	9	12	12	33
32	9	12	14	35
33	12	12	12	36

AOTH30KBTA4 (2 - 4 ROOMS)

COMBINATION NO.	UNIT 1	UNIT 2	UNIT 3	UNIT 4	TOTAL
1	7	22	-	-	29
2	7	24	-	-	31
3	9	22	-	-	31
4	9	24	-	-	33
5	12	22	-	-	34
6	12	24	-	-	36
7	14	18	-	-	32
8	14	22	-	-	36
9	14	24	-	-	38
10	18	18	-	-	36
11	18	22	-	-	40
12	18	24	-	-	42
13	22	22	-	-	44
14	22	24	-	-	46
15	24	24	-	-	48
16	7	7	12	-	26
17	7	7	14	-	28
18	7	7	18	-	32
19	7	7	22	-	36
20	7	7	24	-	38
21	7	9	9	-	25
22	7	9	12	-	28
23	7	9	14	-	30
24	7	9	18	-	34
25	7	9	22	-	38
26	7	9	24	-	40
27	7	12	12	-	31
28	7	12	14	-	33
29	7	12	18	-	37
30	7	12	22	-	41
31	7	12	24	-	43
32	7	14	14	-	35
33	7	14	18	-	39
34	7	14	22	-	43
35	7	14	24	-	45
36	7	18	18	-	43
37	7	18	22	-	47
38	7	18	24	-	49
39	9	9	9	-	27
40	9	9	12	-	30
41	9	9	14	-	32
42	9	9	18	-	36
43	9	9	22	-	40
44	9	9	24	-	42
45	9	12	12	-	33
46	9	12	14	-	35
47	9	12	18	-	39
48	9	12	22	-	43
49	9	12	24	-	45
50	9	14	14	-	37
51	9	14	18	-	41
52	9	14	22	-	45
53	9	14	24	-	47
54	9	18	18	-	45
55	9	18	22	-	49
56	12	12	12	-	36
57	12	12	14	-	38

COMBINATION NO.	UNIT 1	UNIT 2	UNIT 3	UNIT 4	TOTAL
58	12	12	18	-	42
59	12	12	22	-	46
60	12	12	24	-	48
61	12	14	14	-	40
62	12	14	18	-	44
63	12	14	22	-	48
64	12	18	18	-	48
65	14	14	14	-	42
66	14	14	18	-	46
67	7	7	7	7	28
68	7	7	7	9	30
69	7	7	7	12	33
70	7	7	7	14	35
71	7	7	7	18	39
72	7	7	7	22	43
73	7	7	7	24	45
74	7	7	9	9	32
75	7	7	9	12	35
76	7	7	9	14	37
77	7	7	9	18	41
78	7	7	9	22	45
79	7	7	9	24	47
80	7	7	12	12	38
81	7	7	12	14	40
82	7	7	12	18	44
83	7	7	12	22	48
84	7	7	14	14	42
85	7	7	14	18	46
86	7	9	9	9	34
87	7	9	9	12	37
88	7	9	9	14	39
89	7	9	9	18	43
90	7	9	9	22	47
91	7	9	9	24	49
92	7	9	12	12	40
93	7	9	12	14	42
94	7	9	12	18	46
95	7	9	14	14	44
96	7	9	14	18	48
97	7	12	12	12	43
98	7	12	12	14	45
99	7	12	12	18	49
100	7	12	14	14	47
101	7	14	14	14	49
102	9	9	9	9	36
103	9	9	9	12	39
104	9	9	9	14	41
105	9	9	9	18	45
106	9	9	9	22	49
107	9	9	12	12	42
108	9	9	12	14	44
109	9	9	12	18	48
110	9	9	14	14	46
111	9	12	12	12	45
112	9	12	12	14	47
113	9	12	14	14	49
114	12	12	12	12	48

3 & 4 Room Multi System Unit Reference Guide

UNIT NO.	BULKHEAD	MINI DUCT	MID STATIC SLIMLINE	WALL MOUNTED	CASSETTE	FLOOR MOUNT
7				ASTH07KMCD		
9	ARTH09KLLAP	ARTH09KSLAP		ASTH09KMCD	AUTH09KVLA	AGTG09KVCA
12	ARTH12KLLAP	ARTH12KSLAP		ASTH12KMCD	AUTH12KVLA	AGTG12KVCA
14				ASTH14KMCD		AGTG14KVCA
18	ARTH18KLLAP	ARTH18KSLAP	ARTH18KMTAP	ASTH18KMTD	AUTH18KVLA	
22				ASTH22KMTD		
24			ARTH24KMTAP	ASTH24KMTD		

NOTE: The connection charts reference possible combinations as per capacity class, please refer to technical manual for actual indoor capacities.
*Mid Static Slimline cannot be connected in this combination.

AOTG36LBLA5 (2 - 5 ROOMS)

NO.	ROOMS	ROOM 1	ROOM 2	ROOM 3	ROOM 4	ROOM 5	TOTAL
1	2	7	24	-	-	-	31
2		9	24	-	-	-	33
3		12	24	-	-	-	36
4		14	24	-	-	-	38
5		18	18	-	-	-	36
6		18	24	-	-	-	42
7		24	24	-	-	-	48
8	3	7	7	14	-	-	28
9		7	7	18	-	-	32
10		7	7	24	-	-	38
11		7	9	12	-	-	28
12		7	9	14	-	-	30
13		7	9	18	-	-	34
14		7	9	24	-	-	40
15		7	12	12	-	-	31
16		7	12	14	-	-	33
17		7	12	18	-	-	37
18		7	12	24	-	-	43
19		7	14	14	-	-	35
20		7	14	18	-	-	39
21		7	14	24	-	-	45
22	4	7	18	18	-	-	43
23		7	18	24	-	-	49
24		9	9	9	-	-	27
25		9	9	12	-	-	30
26		9	9	14	-	-	32
27		9	9	18	-	-	36
28		9	9	24	-	-	42
29		9	12	12	-	-	33
30		9	12	14	-	-	35
31		9	12	18	-	-	39
32		9	12	24	-	-	45
33		9	14	14	-	-	37
34		9	14	18	-	-	41
35		9	14	24	-	-	47
36	9	18	18	-	-	45	
37	9	18	24	-	-	51	
38	12	12	12	-	-	36	
39	12	12	14	-	-	38	
40	12	12	18	-	-	42	
41	12	12	24	-	-	48	
42	12	14	14	-	-	40	
43	12	14	18	-	-	44	
44	12	14	24	-	-	50	
45	12	18	18	-	-	48	
46	12	18	24	-	-	54	
47	14	14	14	-	-	42	
48	14	14	18	-	-	46	
49	14	14	24	-	-	52	
50	14	18	18	-	-	50	
51	18	18	18	-	-	54	

NO.	ROOMS	ROOM 1	ROOM 2	ROOM 3	ROOM 4	ROOM 5	TOTAL
52	4	7	7	7	7	-	28
53		7	7	7	9	-	30
54		7	7	7	12	-	33
55		7	7	7	14	-	35
56		7	7	7	18	-	39
57		7	7	7	24	-	45
58		7	7	9	9	-	32
59		7	7	9	12	-	35
60		7	7	9	14	-	37
61		7	7	9	18	-	41
62		7	7	9	24	-	47
63		7	7	12	12	-	38
64		7	7	12	14	-	40
65		7	7	12	18	-	44
66	7	7	12	24	-	50	
67	7	7	14	14	-	42	
68	7	7	14	18	-	46	
69	7	7	14	24	-	52	
70	7	7	18	18	-	50	
71	7	9	9	9	-	34	
72	7	9	9	12	-	37	
73	7	9	9	14	-	39	
74	7	9	9	18	-	43	
75	7	9	9	24	-	49	
76	7	9	12	12	-	40	
77	7	9	12	14	-	42	
78	7	9	12	18	-	46	
79	7	9	12	24	-	52	
80	7	9	14	18	-	48	
81	7	9	14	24	-	54	
82	7	9	18	18	-	52	
83	7	12	12	12	-	43	
84	7	12	12	14	-	45	
85	7	12	12	18	-	49	
86	7	12	14	14	-	47	
87	7	12	14	18	-	51	
88	7	14	14	14	-	49	
89	7	14	14	18	-	53	
90	9	9	9	9	-	36	
91	9	9	9	12	-	39	
92	9	9	9	14	-	41	
93	9	9	9	18	-	45	
94*	9	9	9	24	-	51	
95	9	9	12	12	-	42	
96	9	9	12	14	-	44	
97	9	9	12	18	-	48	
98*	9	9	12	24	-	54	
99	9	9	14	14	-	46	
100	9	9	14	18	-	50	
101	9	9	18	18	-	54	
102	9	12	12	12	-	45	
103	9	12	12	14	-	47	

NO.	ROOMS	ROOM 1	ROOM 2	ROOM 3	ROOM 4	ROOM 5	TOTAL
104	5	9	12	12	18	-	51
105		9	12	14	14	-	49
106		9	12	14	18	-	53
107		9	14	14	14	-	51
108		12	12	12	12	-	48
109		12	12	12	14	-	50
110		12	12	12	18	-	54
111		12	12	14	14	-	52
112		12	14	14	14	-	54
113		7	7	7	7	7	35
114		7	7	7	7	9	37
115		7	7	7	7	12	40
116		7	7	7	7	14	42
117		7	7	7	7	18	46
118	7	7	7	7	24	52	
119	7	7	7	9	9	39	
120	7	7	7	9	12	42	
121	7	7	7	9	14	44	
122	7	7	7	9	18	48	
123*	7	7	7	9	24	54	
124	7	7	7	12	12	45	
125	7	7	7	12	14	47	
126	7	7	7	12	18	51	
127	7	7	7	14	14	49	
128	7	7	7	14	18	53	
129	7	7	9	9	9	41	
130	7	7	9	9	12	44	
131	7	7	9	9	14	46	
132	7	7	9	9	18	50	
133	7	7	9	12	12	47	
134	7	7	9	12	14	49	
135	7	7	9	12	18	53	
136	7	7	9	14	14	51	
137	7	7	12	12	12	50	
138	7	7	12	12	14	52	
139	7	7	12	14	14	54	
140	7	9	9	9	9	43	
141	7	9	9	9	12	46	
142	7	9	9	9	14	48	
143	7	9	9	9	18	52	
144	7	9	9	12	12	49	
145	7	9	9	12	14	51	
146	7	9	9	14	14	53	
147	7	9	12	12	12	52	
148	7	9	12	12	14	54	
149	9	9	9	9	9	45	
150	9	9	9	9	12	48	
151	9	9	9	9	14	50	
152	9	9	9	9	18	54	
153	9	9	9	12	12	51	
154	9	9	9	12	14	53	
155	9	9	12	12	12	54	

5 & 6 Room Multi System Unit Reference Guide

UNIT NO.	SLIM DUCT	MID STATIC DUCT	WALL MOUNTED	COMPACT CASSETTE	FLOOR & CEILING CONSOLE
7			ASTG07LVCC		
9	ARTG09LLLLB		ASTG09LVCC / ASTG09LUCB	AUTG09VLVB	
12	ARTG12LLLLB		ASTG12LVCC	AUTG12VLVB	
14			ASTG14LUCB		
18	ARTG18LLTA		ASTG18LFCA	AUTG18LVLA	ABTG18LVTA
22					
24		ARTG24MLC	ASTG24LFCC		

NOTE: The connection charts reference possible combinations as per capacity class, please refer to technical manual for actual indoor capacities.

Connection Charts

AOTG45LBA6 (2 - 6 Rooms)

NO.	ROOMS	ROOM 1	ROOM 2	ROOM 3	ROOM 4	ROOM 5	ROOM 6	TOTAL
1	2	12	24	--	--	--	--	36
2		14	24	--	--	--	--	38
3	2	18	18	--	--	--	--	36
4		18	24	--	--	--	--	42
5	2	24	24	--	--	--	--	48
6		7	7	24	--	--	--	38
7	3	7	9	18	--	--	--	34
8		7	9	24	--	--	--	40
9	3	7	12	18	--	--	--	37
10		7	12	24	--	--	--	43
11	3	7	14	14	--	--	--	35
12		7	14	18	--	--	--	39
13	3	7	14	24	--	--	--	45
14		7	18	18	--	--	--	43
15	3	7	18	24	--	--	--	49
16		7	24	24	--	--	--	55
17	3	9	9	18	--	--	--	36
18		9	9	24	--	--	--	42
19	3	9	12	14	--	--	--	35
20		9	12	18	--	--	--	39
21	3	9	12	24	--	--	--	45
22		9	14	14	--	--	--	37
23	3	9	14	18	--	--	--	41
24		9	14	24	--	--	--	47
25	3	9	18	18	--	--	--	45
26		9	18	24	--	--	--	51
27	3	9	24	24	--	--	--	57
28		12	12	12	--	--	--	36
29	3	12	12	14	--	--	--	38
30		12	12	18	--	--	--	42
31	3	12	12	24	--	--	--	48
32		12	14	14	--	--	--	40
33	3	12	14	18	--	--	--	44
34		12	14	24	--	--	--	50
35	3	12	18	18	--	--	--	48
36		12	18	24	--	--	--	54
37*	3	12	24	24	--	--	--	60
38		14	14	14	--	--	--	42
39	3	14	14	18	--	--	--	46
40		14	14	24	--	--	--	52
41	3	14	18	18	--	--	--	50
42		14	18	24	--	--	--	56
43	3	14	24	24	--	--	--	62
44		18	18	18	--	--	--	54
45	3	18	18	24	--	--	--	60
46		7	7	7	14	--	--	35
47	4	7	7	7	18	--	--	39
48		7	7	7	24	--	--	45
49	4	7	7	9	12	--	--	35
50		7	7	9	14	--	--	37
51	4	7	7	9	18	--	--	41
52		7	7	9	24	--	--	47
53	4	7	7	12	12	--	--	38
54		7	7	12	14	--	--	40
55	4	7	7	12	18	--	--	44
56		7	7	12	24	--	--	50
57	4	7	7	14	14	--	--	42
58		7	7	14	18	--	--	46
59	4	7	7	14	24	--	--	52
60		7	7	18	18	--	--	50
61	4	7	7	18	24	--	--	56
62		7	7	24	24	--	--	62
63	4	7	9	9	9	--	--	34
64		7	9	9	12	--	--	37
65	4	7	9	9	14	--	--	39
66		7	9	9	18	--	--	43
67	4	7	9	9	24	--	--	49
68		7	9	12	12	--	--	40
69	4	7	9	12	14	--	--	42
70		7	9	12	18	--	--	46

NO.	ROOMS	ROOM 1	ROOM 2	ROOM 3	ROOM 4	ROOM 5	ROOM 6	TOTAL
70	4	7	9	12	18	--	--	46
71		7	9	12	24	--	--	52
72	4	7	9	14	14	--	--	44
73		7	9	14	18	--	--	48
74	4	7	9	14	24	--	--	54
75		7	9	18	18	--	--	52
76	4	7	9	18	24	--	--	58
77		7	12	12	12	--	--	43
78	4	7	12	12	14	--	--	45
79		7	12	12	18	--	--	49
80	4	7	12	12	24	--	--	55
81		7	12	14	14	--	--	47
82	4	7	12	14	18	--	--	51
83		7	12	14	24	--	--	57
84	4	7	12	18	18	--	--	55
85		7	12	18	24	--	--	61
86	4	7	14	14	14	--	--	49
87		7	14	14	18	--	--	53
88	4	7	14	14	24	--	--	59
89		7	14	18	18	--	--	57
90	4	7	18	18	18	--	--	61
91		9	9	9	9	--	--	36
92	4	9	9	9	12	--	--	39
93		9	9	9	14	--	--	41
94	4	9	9	9	18	--	--	45
95		9	9	9	24	--	--	51
96	4	9	9	12	12	--	--	42
97		9	9	12	14	--	--	44
98	4	9	9	12	18	--	--	48
99		9	9	12	24	--	--	54
100	4	9	9	14	14	--	--	46
101		9	9	14	18	--	--	50
102	4	9	9	14	24	--	--	56
103		9	9	18	18	--	--	54
104	4	9	9	18	24	--	--	60
105		9	12	12	12	--	--	45
106	4	9	12	12	14	--	--	47
107		9	12	12	18	--	--	51
108	4	9	12	12	24	--	--	57
109		9	12	14	14	--	--	49
110	4	9	12	14	18	--	--	53
111		9	12	14	24	--	--	59
112	4	9	12	18	18	--	--	57
113		9	14	14	14	--	--	51
114	4	9	14	14	18	--	--	55
115		9	14	14	24	--	--	61
116	4	9	14	18	18	--	--	59
117		12	12	12	12	--	--	48
118	4	12	12	12	14	--	--	50
119		12	12	12	18	--	--	54
120	4	12	12	12	24	--	--	60
121		12	12	14	14	--	--	52
122	4	12	12	14	18	--	--	56
123		12	12	14	24	--	--	62
124	4	12	12	18	18	--	--	60
125		12	14	14	14	--	--	54
126	4	12	14	14	18	--	--	58
127		12	14	18	18	--	--	62
128	4	7	7	7	7	7	--	35
129		7	7	7	7	9	--	37
130	4	7	7	7	7	12	--	40
131		7	7	7	7	14	--	42
132	4	7	7	7	7	18	--	46
133		7	7	7	7	24	--	52
134	4	7	7	7	9	9	--	39
135		7	7	7	9	12	--	42
136	4	7	7	7	9	14	--	44
137		7	7	7	9	18	--	48
138	4	7	7	7	9	24	--	54
139		7	7	7	12	12	--	45

5 & 6 Room Multi System Unit Reference Guide

UNIT NO.	SLIM DUCT	MID STATIC DUCT	WALL MOUNTED	COMPACT CASSETTE	FLOOR & CEILING CONSOLE
7			ASTG07LVCC		
9	ARTG09LLLB		ASTG09LVCC / ASTG09LUCB	AUTG09LVLB	
12	ARTG12LLLB		ASTG12LVCC	AUTG12LVLB	
14			ASTG14LUCB		
18	ARTG18LLTA		ASTG18LFCA	AUTG18LVLA	ABTG18LVTA
22					
24		ARTG24LMLC	ASTG24LFCC		

NOTE: The connection charts reference possible combinations as per capacity class, please refer to technical manual for actual indoor capacities.
*Connection of ARTG24LMLC is prohibited in this combination.

NO.	ROOMS	ROOM 1	ROOM 2	ROOM 3	ROOM 4	ROOM 5	ROOM 6	TOTAL
140	7	7	7	12	14	—	—	47
141	7	7	7	12	18	—	—	51
142	7	7	7	12	24	—	—	57
143	7	7	7	14	14	—	—	49
144	7	7	7	14	18	—	—	53
145	7	7	7	14	24	—	—	59
146	7	7	7	18	18	—	—	57
147	7	7	9	9	9	—	—	41
148	7	7	9	9	12	—	—	44
149	7	7	9	9	14	—	—	46
150	7	7	9	9	18	—	—	50
151	7	7	9	9	24	—	—	56
152	7	7	9	12	12	—	—	47
153	7	7	9	12	14	—	—	49
154	7	7	9	12	18	—	—	53
155	7	7	9	12	24	—	—	59
156	7	7	9	14	14	—	—	51
157	7	7	9	14	18	—	—	55
158	7	7	9	14	24	—	—	61
159	7	7	9	18	18	—	—	59
160	7	7	12	12	12	—	—	50
161	7	7	12	12	14	—	—	52
162	7	7	12	12	18	—	—	56
163	7	7	12	12	24	—	—	62
164	7	7	12	14	14	—	—	54
165	7	7	12	14	18	—	—	58
166	7	7	12	18	18	—	—	62
167	7	7	14	14	14	—	—	56
168	7	7	14	14	18	—	—	60
169	7	9	9	9	9	—	—	43
170	7	9	9	9	12	—	—	46
171	7	9	9	9	14	—	—	48
172	7	9	9	9	18	—	—	52
173	7	9	9	9	24	—	—	58
174	7	9	9	12	12	—	—	49
175	7	9	9	12	14	—	—	51
176	7	9	9	12	18	—	—	55
177	7	9	9	12	24	—	—	61
178	7	9	9	14	14	—	—	53
179	7	9	9	14	18	—	—	57
180	7	9	9	18	18	—	—	61
181	7	9	12	12	12	—	—	52
182	7	9	12	12	14	—	—	54
183	7	9	12	12	18	—	—	58
184	7	9	12	14	14	—	—	56
185	7	9	12	14	18	—	—	60
186	7	9	14	14	14	—	—	58
187	7	9	14	14	18	—	—	62
188	7	12	12	12	12	—	—	55
189	7	12	12	12	14	—	—	57
190	7	12	12	12	18	—	—	61
191	7	12	12	14	14	—	—	59
192	7	12	14	14	14	—	—	61
193	9	9	9	9	9	—	—	45
194	9	9	9	9	12	—	—	48
195	9	9	9	9	14	—	—	50
196	9	9	9	9	18	—	—	54
197*	9	9	9	9	24	—	—	60
198	9	9	9	12	12	—	—	51
199	9	9	9	12	14	—	—	53
200	9	9	9	12	18	—	—	57
201	9	9	9	14	14	—	—	55
202	9	9	9	14	18	—	—	59
203	9	9	12	12	12	—	—	54
204	9	9	12	12	14	—	—	56
205	9	9	12	12	18	—	—	60
206	9	9	12	14	14	—	—	58
207	9	9	12	14	18	—	—	62
208	9	9	14	14	14	—	—	60
209	9	12	12	12	12	—	—	57

NO.	ROOMS	ROOM 1	ROOM 2	ROOM 3	ROOM 4	ROOM 5	ROOM 6	TOTAL
210	9	12	12	12	14	—	—	59
211	9	12	12	14	14	—	—	61
212	12	12	12	12	12	—	—	60
213	12	12	12	12	14	—	—	62
214	7	7	7	7	7	7	7	42
215	7	7	7	7	7	7	9	44
216	7	7	7	7	7	7	12	47
217	7	7	7	7	7	7	14	49
218	7	7	7	7	7	7	18	53
219	7	7	7	7	7	9	9	46
220	7	7	7	7	9	9	12	49
221	7	7	7	7	9	9	14	51
222	7	7	7	7	9	9	18	55
223	7	7	7	7	12	12	12	52
224	7	7	7	7	12	14	14	54
225	7	7	7	7	12	18	18	58
226	7	7	7	7	14	14	14	56
227	7	7	7	9	9	9	9	48
228	7	7	7	9	9	9	12	51
229	7	7	7	9	9	9	14	53
230	7	7	7	9	12	12	12	54
231	7	7	7	9	12	14	14	56
232	7	7	7	9	14	14	14	58
233	7	7	7	12	12	12	12	57
234	7	7	7	12	12	14	14	59
235	7	7	7	12	14	14	14	61
236	7	7	9	9	9	9	9	50
237	7	7	9	9	9	9	12	53
238	7	7	9	9	9	9	14	55
239	7	7	9	9	12	12	12	56
240	7	7	9	9	12	14	14	58
241	7	7	9	9	14	14	14	60
246	7	7	9	12	12	12	12	59
247	7	7	9	12	12	14	14	61
248	7	7	12	12	12	12	12	62
242	7	9	9	9	9	9	9	52
243	7	9	9	9	9	9	12	55
244	7	9	9	9	9	14	14	57
245	7	9	9	9	12	12	12	58
249	7	9	9	9	12	14	14	60
250	7	9	9	12	12	12	12	61
251	9	9	9	9	9	9	9	54
252	9	9	9	9	9	9	12	57
253	9	9	9	9	12	12	12	60

5 & 6 Room Multi System Unit Reference Guide

UNIT NO.	SLIM DUCT	MID STATIC DUCT	WALL MOUNTED	COMPACT CASSETTE	FLOOR & CEILING CONSOLE
7			ASTG07LVCC		
9	ARTG09LLLLB		ASTG09LVCC / ASTG09LUCB	AUTG09VLVB	
12	ARTG12LLLLB		ASTG12LVCC	AUTG12VLVB	
14			ASTG14LUCB		
18	ARTG18LLTA		ASTG18LFCA	AUTG18LVLA	ABTG18LVTA
22					
24		ARTG24MLC	ASTG24LFCC		

NOTE: The connection charts reference possible combinations as per capacity class, please refer to technical manual for actual indoor capacities.
 * Connection of ARTG24MLC is prohibited in this combination.

AUSTRALIA'S FAVOURITE AIR®

| FUJITSU

FUJITSU GENERAL AUSTRALIA
A SUBSIDIARY OF FUJITSU GENERAL LIMITED

fujitsugeneral.com.au
1300 882 201
contact@fujitsugeneral.com.au

Fujitsu General accepts no liability for incorrect data.
Please ensure you have confirmed installation
requirements and pipe sizes prior to install.

FGAMULT110/23

AIRSTAGE