



Air Conditioning Systems

Zone Controller

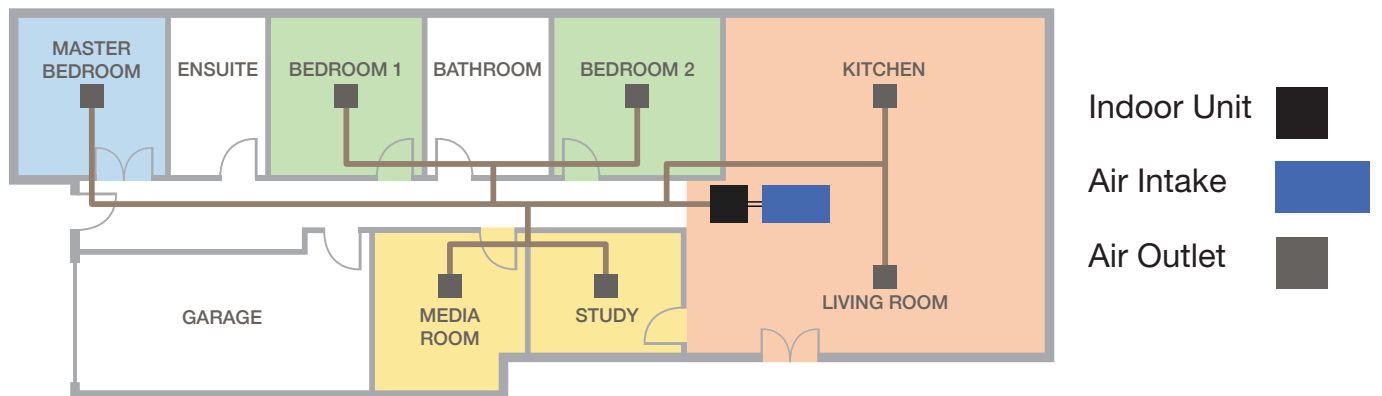
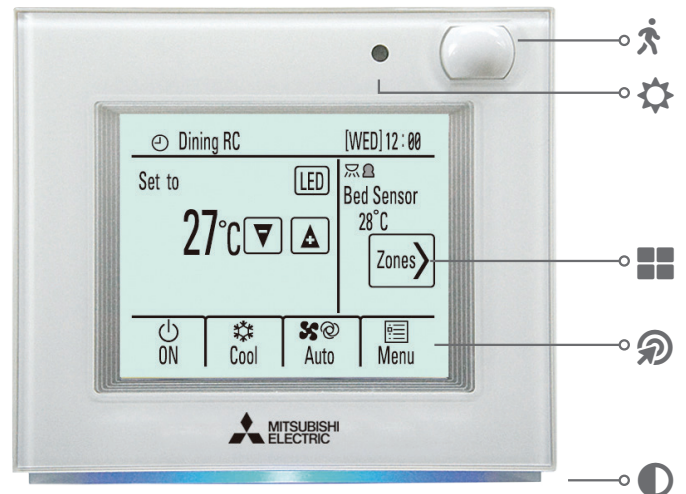


Zone Controller

What is Zoning?

Zoning is the ability to turn off a section of your ducted air conditioning system when not in use. With today's smart home technology, you can do this remotely via the Wi-Fi App, Alexa or Google Assistant.

The Mitsubishi Electric Zone Controller expands functionality, delivering conditioned air where you want it in the home/office. With the ability of creating up to 4 or 8 separate zones, why condition air in unoccupied areas?



Up to 4 or 8 Zones

The Zone Controller makes it possible to distribute conditioned air to where you need it in your home/office. With the ability of creating up to 4 or 8 separate zones, there is no need to condition air in unoccupied rooms. Unoccupied spaces can be prevented from receiving airflow, reducing power consumption in unnecessary areas.

Weekly Timer

Zone Controller allows setting weekly schedule for unit On/Off, modes, set temperature and also zones On/Off. Up to eight operation patterns can be scheduled for each day.

LED Indicator

A colour band indicates the operating mode or can be configured to other settings. i.e. Off/Temperature/Colour preference.

Touch Panel

A 4.3" easy to use touch panel with backlight.

Brightness Sensor

Day and time settings can be combined with the brightness sensor to automatically turn the air conditioner off when lights are switched off.

Occupancy Sensor

If motion is undetected the air conditioner switches to energy saving mode.

Averaging Sensor Control

Zone Controller allows having 5 sensors in the system. Control of the unit is based on averaging of the sensors of the active zone.

Wi-Fi CONTROL

Wi-Fi Control gives you the freedom to utilise multiple functions of your air conditioner at your fingertips. Turning the unit On/Off, adjusting set temperature, changing mode and fan speed are all possible.



Control your Comfort Anywhere Anytime*¹

Unlock the door to smarter heating and cooling systems through your Ducted systems, for total home comfort. This innovative technology connects your Mitsubishi Electric air conditioner to your smartphone, tablet or online account, giving you the freedom to fully control each unit on-the-go via an internet connection from anywhere in the world.

Features:

- Adjusting set temperature
- Changing mode
- Fan speed
- Auto-Off
- Zone Control

Voice Control

Mitsubishi Electric air conditioning systems connected with Wi-Fi Control*¹ are now Amazon Alexa*² and Google Assistant*³ enabled. This means you can enjoy hands-free control.

*¹ Optional Wi-Fi adapter required per unit.

Requires an internet connection and the App downloaded on your smartphone or tablet with the latest operation system available.

*² To use Amazon Alexa to control your air conditioner you will need an Amazon Alexa Echo device.

*³ To use Google Assistant to control your air conditioner you will need a Google Home Smart speaker.

Develop Operating Rules

Tailor your system to always meet your needs and unlock the full potential of your air conditioner. Program your system to individually manage each zone with up to 8 different operational patterns available per day.

Control Multiple Units

Additional wall split units in your home? Purchase multiple adaptors to manage all air conditioners independently on the same account, to ensure complete control over your system. The result is a tailored system to your needs.



Wi-Fi Voice Control with Amazon Alexa & Google Assistant

Mitsubishi Electric air conditioners are now smart home adaptable when connected with optional Wi-Fi Control. This means you can now enjoy hands-free air conditioner control.

Coming home with your hands full? Relaxing on the sofa and not ready just yet to get up for the remote? Now you can tell your air conditioner to turn itself on without lifting a finger!

What is Alexa?

Alexa is Amazon's cloud-based voice service. With Alexa, you can ask to play music, hear the news, check weather, control smart home devices, and more.

To use Alexa you will need an Amazon Echo device.

Amazon Echo is a hands-free, voice controller speaker. It connects to the Alexa voice service - the brain behind Echo. Now you can simply ask Alexa to change the room temperature. All you need to say is the wake word "Alexa" and Echo responds accordingly.

Just ask Alexa...

"Alexa, turn on the lounge to 24"

"Alexa, what is the lounge set to?"

"Alexa, set the lounge to 21"

"Alexa, turn off the lounge"



What is Google Assistant?

Google Assistant is Google's voice-controlled smart assistant.

Your Google Assistant extends to help you across devices, like Google Home, your phone, and more.

With a Google Home smart speaker and "Hey, Google" voice commands, you can ask to play music, hear the news, check weather, control smart home devices, and more.

To use Google Assistant to control your smart home devices you will need a Google Home smart speaker.



Just ask your Google Assistant...

"Hey Google, turn on the lounge to 24"

"Hey Google, what is the lounge set to?"

"Hey Google, set the lounge to 21"

"Hey Google, turn off the lounge"

With an Amazon Echo device or Google Home smart speaker and a Wi-Fi Control Interface connected to your Mitsubishi Electric air conditioner, you can take your home comfort to the next level.

System Components

Zone Controller	
Parts	Specifications
Zone Controller	<p>Make sure the correct zone controller is selected from the following 4 models.</p> <ul style="list-style-type: none"> • Maximum 4 of 24 V AC damper motor connecting type: PAC-ZC40L-E. • Maximum 4 of 240 V AC damper motor connecting type: PAC-ZC40H-E. • Maximum 8 of 24 V AC damper motor connecting type: PAC-ZC80L-E. • Maximum 8 of 240 V AC damper motor connecting type: PAC-ZC80H-E.
Zone Remote Controller	<p>A maximum of 2 remote controllers can be connected. 1x remote controller is included in the Zone Controller. Additional remote part #: PAR-ZC01M-E.</p>
Temperature Sensors	<p>A maximum of 5 temperature sensors.</p> <ul style="list-style-type: none"> • Intake air temperature sensor in the indoor unit. • Temperature sensor in the main remote controller. • Temperature sensor in the sub remote controller. • Optional temperature sensor 1: PAC-SE41TS-E. • Optional temperature sensor 2: PAC-SE41TS-E. <p>They can be assigned to each of the zones.</p>
Damper Motor (Locally Supplied)	<p>Only drive open, drive close damper motor can be connected. (Spring motor damper cannot be used). If 24 V AC motors are used ensure the transformer is adequately sized for the zone motors connected and ensure it's suitable for the installation conditions.</p>

Compatible Units:

Our current range of ducted units, including City Multi ducted models.

The products of Mitsubishi Electric Australia come with guarantees, additional to this Warranty, that cannot be excluded under the Australian Consumer Law. You are entitled to a replacement or refund for a major failure and for compensation for any other reasonably foreseeable loss or damage. You are also entitled to have the goods repaired or replaced if the goods fail to be of acceptable quality and failure does not amount to a major failure.

ZONE2021_JUN4



MitsubishiElectric.com.au